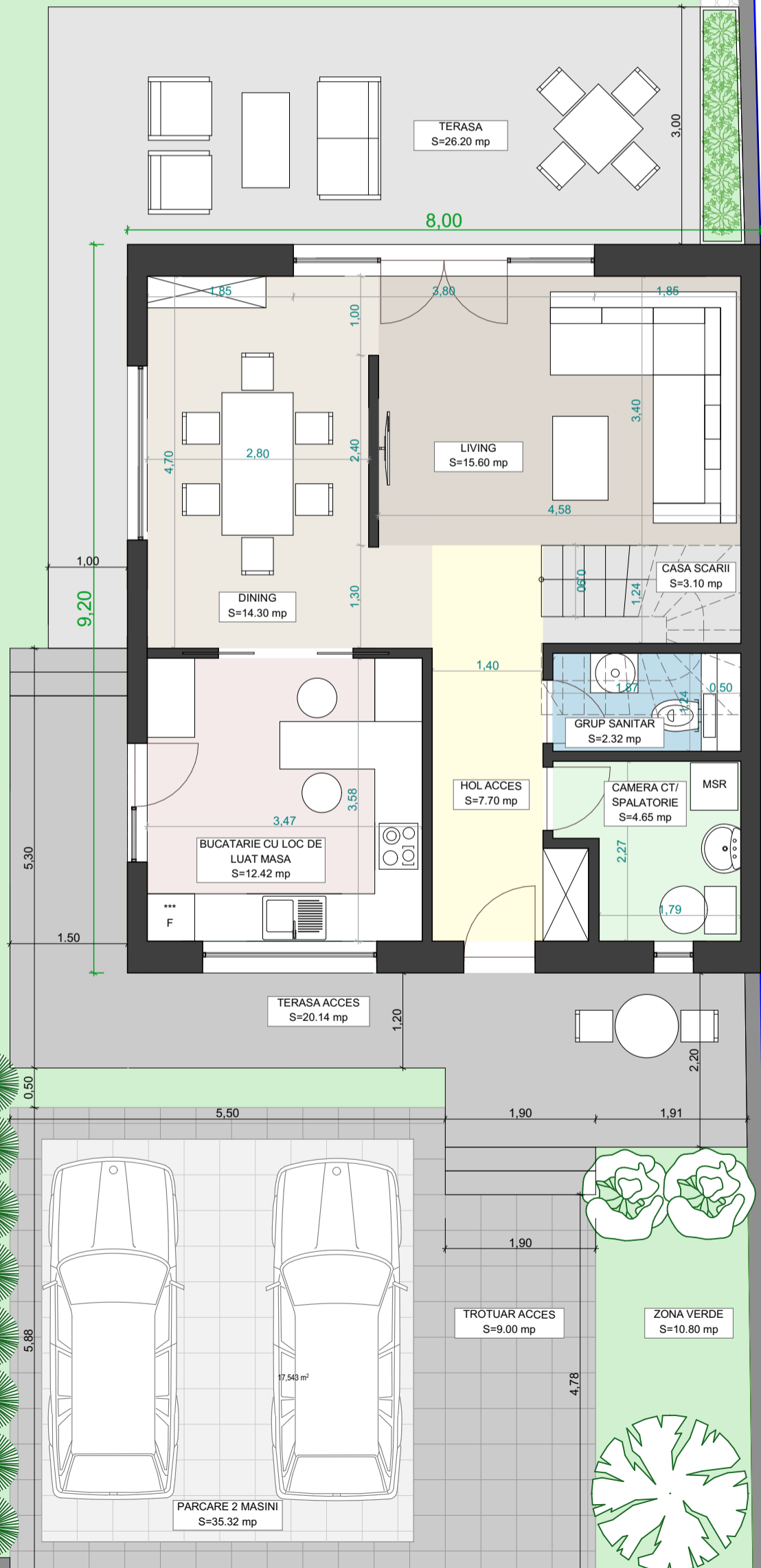




ZONA VERDE
S=209.50 mp



S utila PARTER= 60.09 mp

BILANT PARCELA (EXEMPLU LOT 34)

- SUPRAFATA TEREN = 426.83 mp
- SUPRAFATA CONSTRUITA = 73.60 mp
- SUPRAFATA DESFASURATA = 147.20 mp
- SUPRAFATA UTILA PARTER = 60.09 mp
- SUPRAFATA UTILA ETAJ = 55.22 mp
- SUPRAFATA UTILA TOTALA = 115.31 mp
- TERASA ACCES = 20.14 mp
- TERASA = 26.20 mp
- ALEE PERIMETRALA = 5.10 mp
- ALEE ACCES = 9.00 mp
- PARCARE 2 MASINI = 35.32 mp
- ZONA VERDE INTRARE = 10.80 mp
- CURTE = 233 mp